

Unit 1 was traveling south on SR 305.

Unit 2 was stopped for traffic southbound on SR 305. Unit 2 was stopped behind Unit 4.

Unit 3 was northbound on SR 305 approaching Morgan RD.

Unit 4 was stopped on SR 305 southbound behind Unit 5, and in front of Unit 2, who was also stopped waiting for a vehicle to turn left in front of them.

Unit 1 failed to stop and struck the back of Unit 2. Unit 2 was pushed into the back of Unit 4. Unit 2 began a clockwise rotation after striking Unit 4 and continued into the oncoming northbound lane of SR 305. Into the path of Unit 3. It is believed based on vehicle evidence Unit 3 struck Unit 2 in the passenger side doors. Unit 2 separated striking the guardrail with the driver side and slid down the guardrail coming to rest. Unit 3 came to rest in front of Unit 2.

After Unit 2 struck Unit 4, Unit 4 continued forward striking Unit 5. Unit 4 and Unit 5 after the collision, pulled forward and off the roadway.

Unit 1 came to rest in the middle of the roadway.

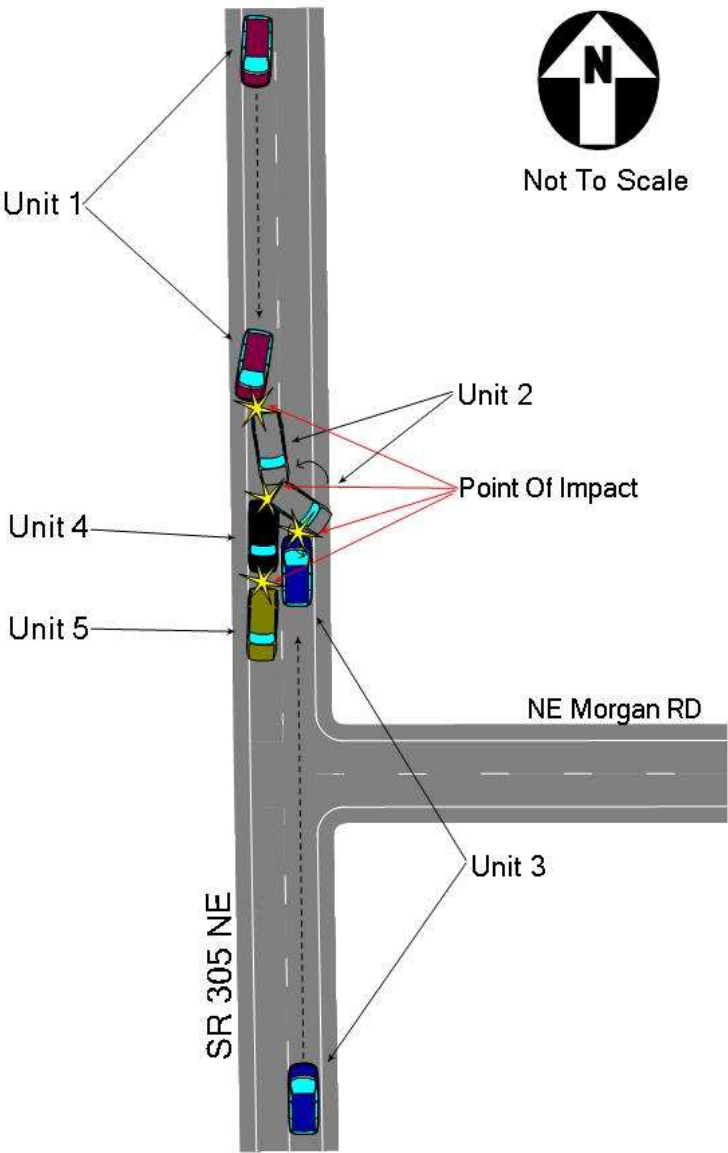
Driver of Unit 2 was air lifted to Harborview Medical Center in Seattle with probable significant injury. I later spoke to the driver of Unit 2 while at Harborview Medical Center. Driver of Unit 2 told me she had the following injuries. Approximately 9 fractured ribs, 8 on her right side and 1 on her left side. Her cervical vertebrae number 5 was fractured, broken right front tooth, concussion, dent in her head, hands swollen, multiple contusions and scrapes. She is having to take medication for her injuries.

The driver of Unit 3, complained of possible broken right hand, clavicle injury, head, chest and shoulder pain. I later spoke with the driver of Unit 3, who had been seen by a doctor, and she stated she had bruising to her face, right side of her body and hands. The drivers and passenger(s) of Unit 4 and 5 complained of minor injuries and were not treated on scene.

We applied for a blood search warrant for the driver of Unit 1, it was granted. We obtained a sample of driver Unit 1's blood for later testing.

After investigation, it appears the driver of Unit 1 was impaired by possible narcotics and was arrested for DUI, vehicle assault, and DWLS 3rd. The driver of Unit 1 was also cited for inattentive driving and expired registration.

Part 1



Part 2

