

## NARRATIVE

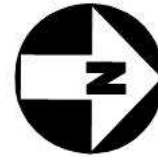
Unit 1, traveling south on Madison Ave, began to negotiate a left turn onto Ihland Way. The driver of unit 1 did not see the cyclist traveling north on Madison Ave and made the turn. The cyclist was unable to slow or stop before colliding with the right side of unit 1.

The operator of the electric pedalcycle was not wearing a helmet. The operator was knocked off of her cycle due to the collision. She was transported to hospital by Airlift NW for a potential head injury. The operator was conscious and speaking upon transport.

A witness was identified and advised that he was on foot near the location of the collision. He stated that the electric cycle had two passengers in dark clothing and was being operated without a forward facing light of any kind. He stated that unit 1 slowed to make a left turn, had its headlights on and activated its turn indicator before making the turn. He stated that the cycle was difficult to see.

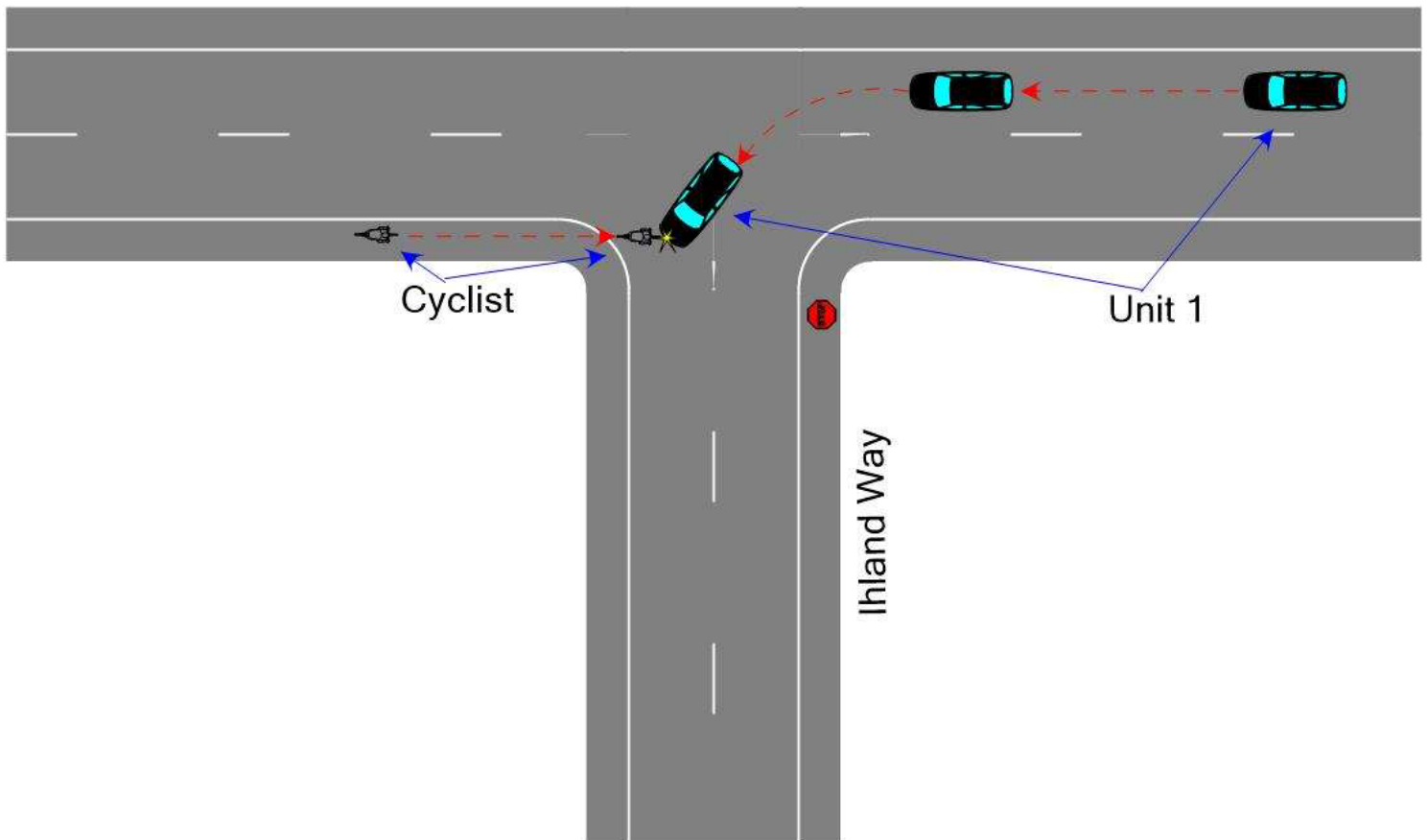
Another witness, the passenger on the electric cycle, stated that she and the operator were traveling north on Madison Ave in the designated bike lane. As they approached Ihland Way, unit 1 negotiated its turn directly in front of their cycle. The operator was unable to stop before colliding with the right front of unit 1. She advised that she was knocked to the ground but was uninjured. She was checked by aid and released to her step-father. She was wearing dark, non-reflective clothing and no helmet. She did not know if the headlight was on while the cycle was being operated.

Two other witnesses were on an electric cycle a few hundred feet behind the involved electric cycle. They stated that unit 1 made a left turn right in front of the electric cycle, causing the collision.



Not to scale

Madison Ave



Cyclist

Unit 1

Inland Way