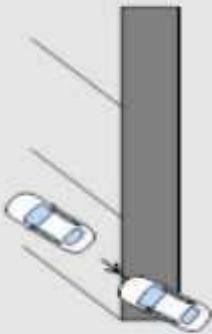


NARRATIVE

Vehicle 1 was backed in to a parking space in the parking lot of the Bainbridge Island ferry terminal. The driver of vehicle 1 was operating a car dealership rental vehicle. The driver, attempting to exit the parking lot, shifted the vehicle into reverse believing it was drive. The vehicle lurched rearward and jump onto the curbed barrier separating the parking space lanes. The vehicle knocked down a handicap parking space sign and became high-centered on the barrier. The vehicle's gas tank ruptured and began slowly leaking gasoline. The gasoline was recovered and cleaned by on-site ferry terminal staff. The driver of vehicle 1 called for a private tow. Exchange of information forms were given to the driver and the terminal staff. Damage threshold met.



Not to scale